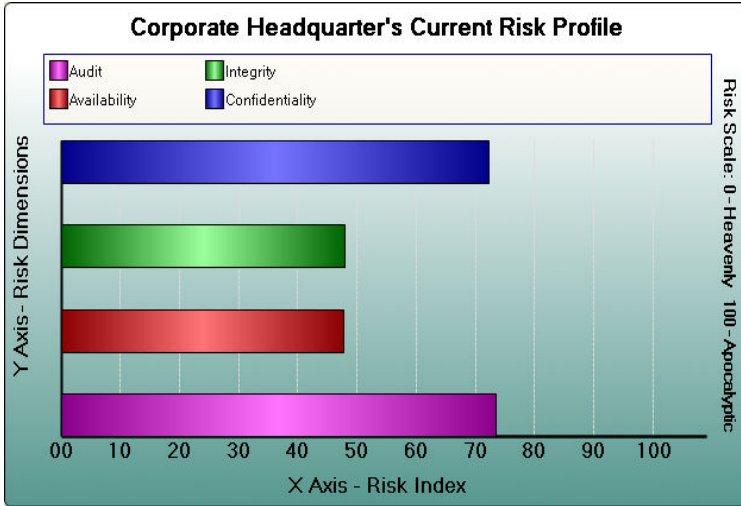


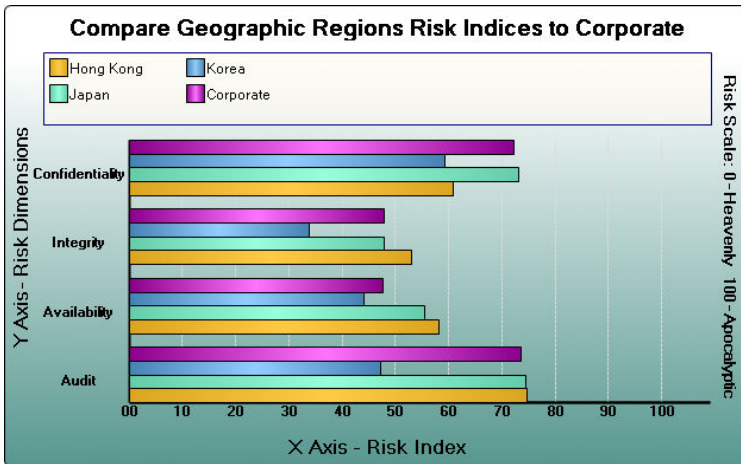
Compare Regions—Simulate Compliance

How do the Asia/Pacific divisions compare to corporate?



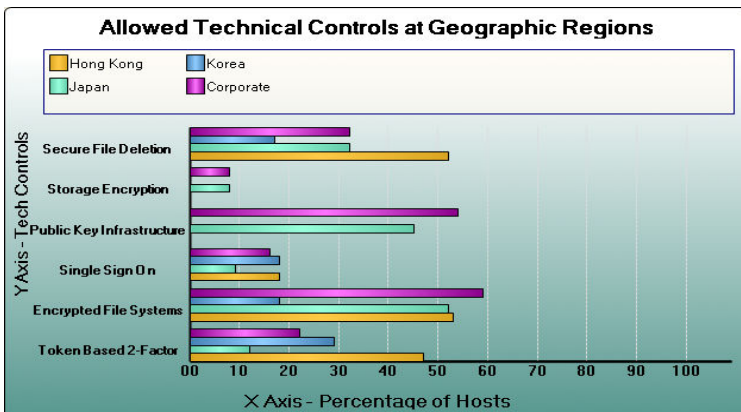
What is the risk to information at Corporate Headquarters?

The risk profile at left describes the risk of all hosts associated with Corporate Headquarters. TRM evaluated the administrative processes and technical controls deployed in the environment, in addition to the hosts for each system associated with the process. The Headquarters environment is 100% compliant with corporate policy.



How do my regions compare?

The three international geographic regions have their own security standards. Corporate expected higher risk indices than the corporate environment. The analysis completed using TRM within 1.5 weeks, revealed the Japan and Hong Kong environments were about equal to the corporate environment's risk indices. Korea's Risk Indices were up to 25 risk index points lower than corporate risk indices.



How would more technology impact my risk?

After a discussion based on the risk indices, the corporate IT and Risk departments recommended the international geographic regions remain in control of their own security environments rather than be required to adhere to all corporate compliance policies and deploy the corporate recommended technology controls. However, they will be evaluated by TRM quarterly to ensure risk is not increasing. The agreed-upon decision to NOT push corporate standards to these regions saved over \$500,000.